

## Timetable Monday 11th May 2020

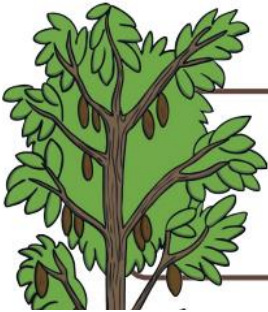
**Reading Mission:**  
30  
minutes

First, watch this video with your child to see how chocolate is made up until it is shipped to factories.

<https://www.youtube.com/watch?v=Khdz2Stp2ZQ>

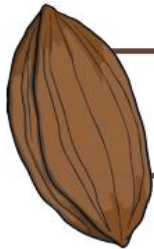
Then read the following text with your child, supporting them when necessary.

### Where Does Chocolate Come From?



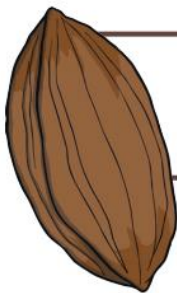
Cacao trees are grown in large plantations in tropical regions, such as in Brazil, South America.

Plantation – a place where trees or crops are grown



After six months, the cacao pods are ripe and they are harvested.

Harvested – picked



The pods are split open with a machete and the cacao beans are removed.

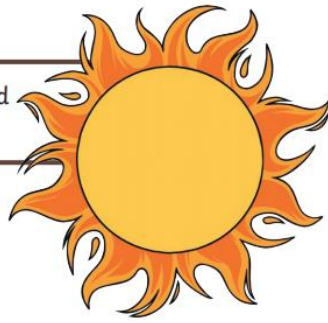
Machete – a big, heavy knife

The beans are covered with banana leaves and left for 5 days to ferment.

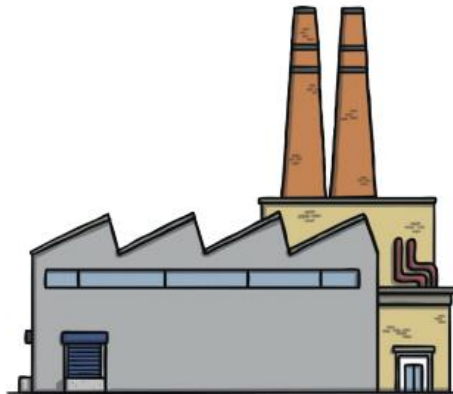


Ferment – change colour and taste after being left for some time.

The beans are dried out in the sun.



At the factories, the beans are cleaned and then roasted.



The shells are removed and the beans are ground into a thick liquid.

1. Where on the tree do cacao seeds grow?
2. What are the seeds of a cacao tree used to make?
3. How do the farmers get the seeds out of the cacao pods?
4. How are the beans dried out?
5. What must be done to the cacao beans before they are ground up into a liquid?
6. Why do you think that cacao trees don't grow in England?

**Writing Mission:**  
30  
minutes

Read the following excerpt from 'Charlie and the Chocolate Factory' to or with your child.

Charlie Bucket stared around the gigantic room in which he now found himself. The place was like a witch's kitchen! All about him black metal pots were boiling and bubbling on huge stoves, and kettles were hissing and pans were sizzling, and strange iron machines were clanking and spluttering, and there were pipes running all over the ceiling and walls, and the whole place was filled with smoke and steam and delicious rich smells.



Then watch this clip from the film version of 'Charlie and the Chocolate Factory'

<https://www.dailymotion.com/video/x2v75qy>

Today's Mission: Lift-the-flap Challenge!

For today's challenge you will be creating your own chocolate factory! Your mission is to design your own lift-the-flap picture of your very own Inventing Room. You will need two pieces of paper or card.

On one piece of card, draw your inventing room with all its pots, pans etc. Then cut out a flap from your second piece of paper for each pot and stick it onto your drawing. Underneath each flap you can then draw what amazing new sweet or chocolate bar is being made in that pot with a creative name and/or a description.

E.g. **roast chicken flavoured lollipops** or **chocolate with jellybeans inside**  
or **chewy sweets that make you float** or **toffees that make you turn green**

Some examples of Lift-the-flap pictures are below:



Extension Challenge: A story

Can you write a short story about the lift-the-flap picture, explaining what happens to the mixtures in your different pots and pans when saucepan lids are lifted and what effects these might have on people nearby?

**Maths**  
**Mission:**  
30  
minutes

Today's maths mission will be focused on reading o'clock times on an analog clock.

**Do Now:** Watch 'How to tell the time' video attached below -

<https://www.bbc.co.uk/bitesize/topics/zm4k7ty/articles/zbjbbdm>

(Note: please only play first video)

**Mission 1:** Can you write the times shown on each clock below? Remember to check your numbers are formed the correct way round.



1. \_\_\_\_ o'clock



2. \_\_\_\_ o'clock



3. \_\_\_\_ o'clock



4. \_\_\_\_ o'clock



5. \_\_\_\_ o'clock



6. \_\_\_\_ o'clock



7. \_\_\_\_ o'clock



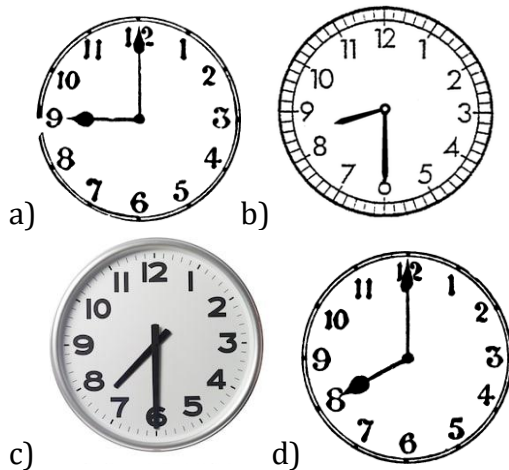
8. \_\_\_\_ o'clock

- 1.
- 2.
- 3.
- 4.
- 5.
- 6.
- 7.
- 8.

**Teacher Tip:** Explain to your child that when the minute hand is pointing to the 12 it is o'clock. We then look at the hour hand to see what the hour is. For example, if the hour hand was pointing to the 6 and the minute hand was pointing to the 12 it is 6 o'clock.

### Mission 2: Time Challenges

1. Sam leaves for school at 8 'clock. Jay leaves half an hour later than Sam. Which clock shows when Jay leaves for school?



Can you explain why?

2. Which of these are shorter than 1 week?
  - a) 1 year
  - b) 1 day
  - c) 1 minute
  - d) 1 hour
  - e) 1 month

Before this final challenge, you may want to explain to your child how to read a calendar and ask him or her to sing you the 'Days of the Week' song.

3. Jackie is looking forward to the events marked on the calendar.

January						
Sun	Mon	Tue	Wed	Thurs	Fri	Sat
			1	2	3	4
5	6	7	8	9	10	11
12	13	14	15	16	17	18
19	20	21	22	23	24	25
26	27	28	29	30	31	

Use the clues to identify the date on which she will do each activity. You must

- Jackie is having a tea party at the weekend. This will be on the \_\_\_ January.
- She is FaceTime calling her grandma on a Tuesday. This will be on the \_\_\_ January.
- Five days after the tea party she is going to the park for a walk. This will be on the \_\_\_ January.
- Close to the end of the month she is going to watch the new Sonic film. This will be on the \_\_\_ January.

Note: You may also or as an alternative wish to make different o'clock times using an analog clock or you could use the website attached below. Move the clock's hands and your child can write the times down.

<https://toytheater.com/clock/>

**Topic Mission:  
Day 1**

Your topic mission this week is based on the theme 'chocolate'.

In today's mission you will be using your pencil skills to finish drawing famous chocolate bars.

Below is a zoomed in picture of a chocolate bar. Can you identify the chocolate and use your pencil skills to complete the picture?



These Missions have been designed to be accessible, using little resources and most importantly fun for your children to complete. Please use what you can, any resources you do not have could be substituted for something else and suggestions have been made for this where possible.